

# From Day 1: V-Go® is as easy as

1 Fill

2 Wear

3 Go

## V-Go® Customer Care (VCC) provides 1-on-1 support

From the moment you start V-Go, VCC is with you every step of the way. Upon enrollment, you will be assigned a dedicated **V-Go Partner** to provide support to help make starting on and staying with V-Go smooth and easy.

- Personalized 1-on-1 support with your V-Go Partner
- **Fill, Wear & Go** step-by-step, on-demand instruction by phone or live video chat
- Checks your insurance and provides pharmacy support



## Getting Started With V-Go®

Fill this worksheet out with your doctor.

Time to apply a new V-Go each day: \_\_\_\_\_

At mealtimes, use the amount of insulin prescribed by your doctor (**1 click = 2 Units**).

	How many times will I click the V-Go Bolus Delivery Button?	How many insulin units will there be?
Breakfast	clicks =	Units
Lunch	clicks =	Units
Dinner	clicks =	Units
Snack	clicks =	Units

Make sure to keep track of the number of clicks you give yourself at each meal.

- If you lose count, **STOP** clicking, monitor your blood glucose, and follow the plan agreed upon with your doctor or healthcare professional.

Follow-up appointments:

- Follow-up appointment with your doctor (1st) \_\_\_\_\_
- Follow-up appointment with your doctor (2nd) \_\_\_\_\_

Call V-Go Customer Care and enroll today for information about filling your V-Go prescription and ongoing personalized support.



And there's so much more. With V-Go and VCC, you never have to manage your diabetes alone.

Enroll today at **1-866-881-1209**.

Valeritas does not give medical advice about insulin therapy. You should discuss all medical therapies with your physician.

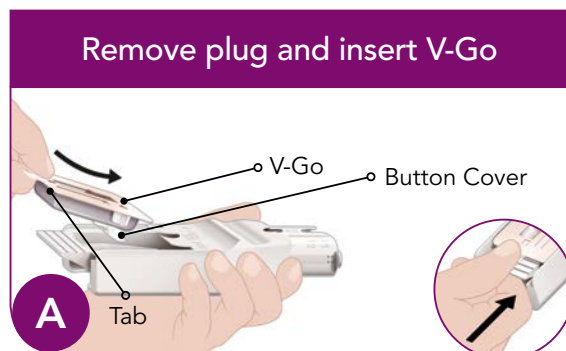


V-Go is a registered trademark of Valeritas, Inc.  
ART-1093 07/2017 © 2017 Valeritas, Inc.

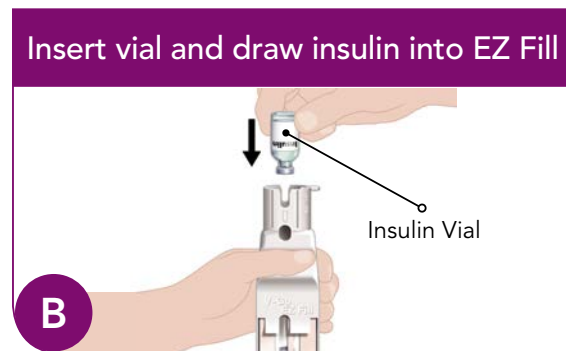


# Using V-Go®

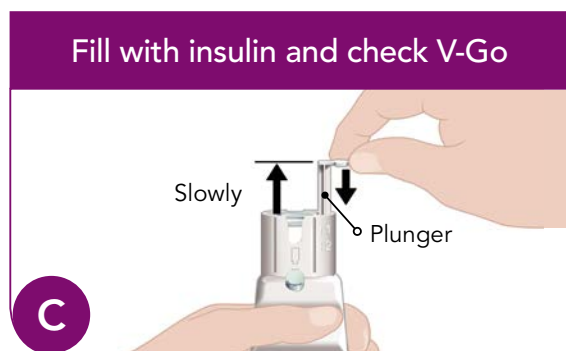
## 1 Fill How to properly fill V-Go



- Pull ribbed drawer handle and lift plug out of EZ Fill; set aside
- Slide V-Go into EZ Fill drawer with adhesive side up and Button Cover down
- Hold V-Go down and push drawer closed



- Remove the insulin vial cap and EZ Fill cap
- Keep EZ Fill upright and turn insulin vial upside down, pushing firmly into vial holder

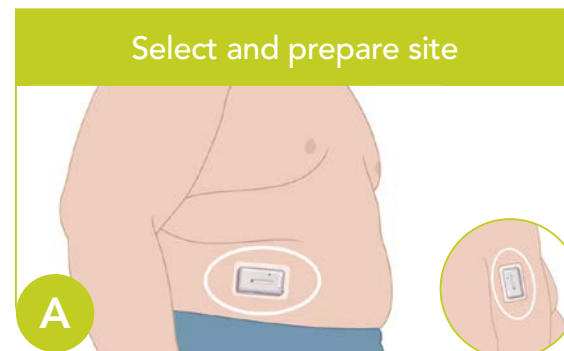


- Slowly pull up plunger as far as it can go; wait 5 seconds
- Then slowly push plunger down over 25 seconds
- Watch V-Go fill with insulin in a continuous flow of droplets
- Check that V-Go is full— a few small bubbles are normal

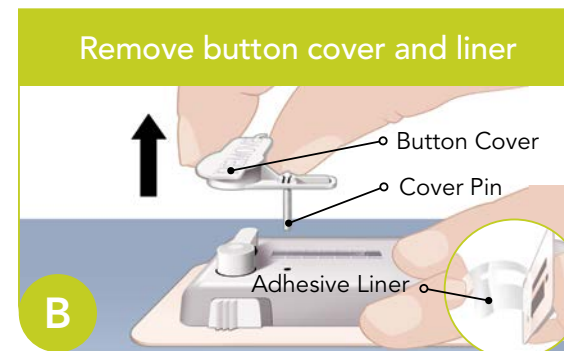


- Remove V-Go; leave plunger in down position
- Ensure that V-Go is filled and there are no large air bubbles
- Clean and place plug back in EZ Fill; store in the refrigerator

## 2 Wear How to correctly apply and begin the flow of insulin



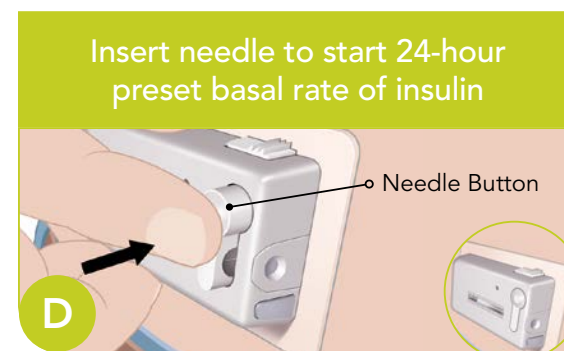
- Select application site—avoid skin fold, muscle, and bone
- Clean area with alcohol swab and let dry



- Pull Button Cover straight up and discard
- Lift adhesive tab and remove adhesive liner

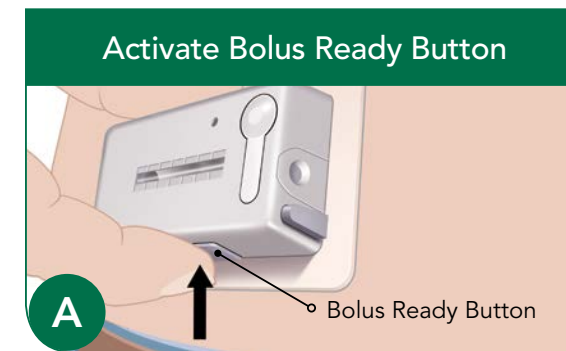


- Press V-Go onto the skin for 5-10 seconds
- Avoid pushing buttons during application

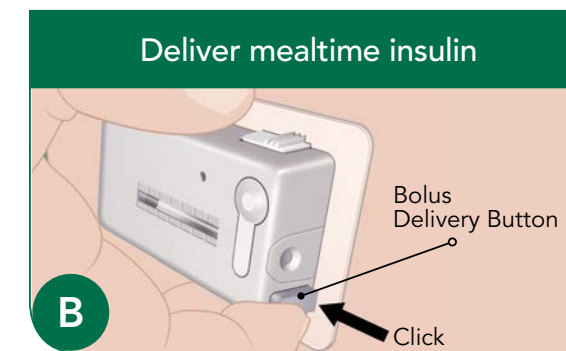


- With firm motion, press rounded top of Needle Button completely into V-Go until you hear a click and button locks in place
- Needle must lock to begin flow of insulin

## 3 Go How to deliver mealtime insulin



- Locate and press the Bolus Ready Button
- Bolus Delivery Button will pop out and you will hear a click



- Push Bolus Delivery Button into V-Go® until it stops and clicks
- 1 click = 2 Units of insulin



- In one motion, firmly slide and press Needle Release Button



- Ensure the Needle Release Button has popped up
- Carefully peel V-Go away from your skin and discard