

V-Go[®]

Simple to start, easy to use¹




V-Go Start Guide

Make basal and mealtime shots a thing of the past.
Take control with V-Go.

V-Go Cares[®] Customer Service
Contact us to learn more about V-Go

-  Call 1-866-881-1209 for general V-Go questions
-  Call 1-877-523-1199 to speak to a V-Go Trainer
-  Visit www.go-vgo.com

VGO[®]
all-in-one
insulin delivery patch



"V-Go® changed my life immensely. It makes it so much easier to control my A1C."

– V-Go user

Start on V-Go, stay on track

Learning something new can be challenging. We have the support you need to start and stay on V-Go successfully.

- Visit www.go-vgo.com and learn how to make basal and mealtime injections a thing of the past.

Get started on V-Go today and experience simplified insulin delivery you apply like a patch.

Have questions? Contact your V-Go Cares Team at 1-866-881-1209 or go to www.go-vgo.com

Day 1: Start right with V-Go®

- Do not take any other insulin shots in combination with V-Go unless directed by your healthcare professional
- Wear V-Go any place where insulin can be injected and where V-Go remains flat when you sit, stand, or lie down
- Once V-Go is applied, make sure to press the Start Button until it locks to begin the flow of insulin
- Use the Bolus Ready and Bolus Delivery Buttons to deliver the prescribed amount of insulin (1 click = 2 Units) for meals/snacks
- After a full 24 hours, replace V-Go with a new filled V-Go. If V-Go falls off, replace it with a new filled V-Go immediately
- If you have general questions, contact V-Go Cares® at 1-866-881-1209
- If you have question related to how to fill, wear and go with V-Go, contact our Certified V-Go Training team at 1-877-523-1199
- _____
- _____

Visit www.go-vgo.com for more information and support to get started on V-Go.

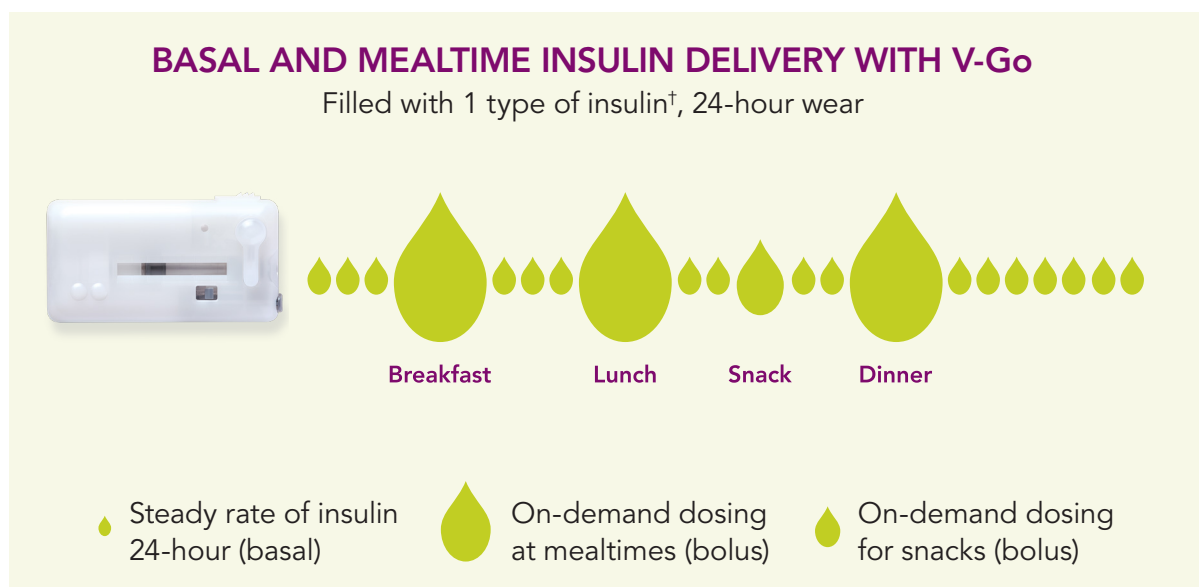
V-Go® replaces the need for basal & mealtime insulin injections

Insulin is naturally secreted from the pancreas in two ways²

- a low and steady **basal** (background) release of insulin all day to keep blood glucose in a narrow range overnight and between meals.²
- a **bolus** (burst) of insulin in response to a rise in glucose after eating food.²

Insulin secretion is diminished in Type 2 diabetes

- **V-Go** helps manage type 2 diabetes because it **delivers insulin much like your body naturally releases insulin.**^{*2}



With V-Go, you can help control your blood sugar with just **1 rapid-acting insulin** and **1 daily application.**[†] This means eliminating the need for basal and mealtime injections to help improve blood glucose control throughout the entire day and at mealtimes.³⁻⁵

^{*}If you follow the *V-Go Instructions for Patient Use*.

[†]A U-100 rapid-acting insulin should be used with V-Go. Humalog® (insulin lispro [rDNA origin] injection) and NovoLog® (insulin aspart [rDNA origin] injection) have been tested and found to be safe for use in the V-Go Wearable Insulin Delivery Device.

Humalog® is a registered trademark of Eli Lilly and Company.

NovoLog® is a registered trademark of Novo Nordisk A/S.

Have questions? Contact your V-Go Cares Team at 1-866-881-1209 or go to www.go-vgo.com

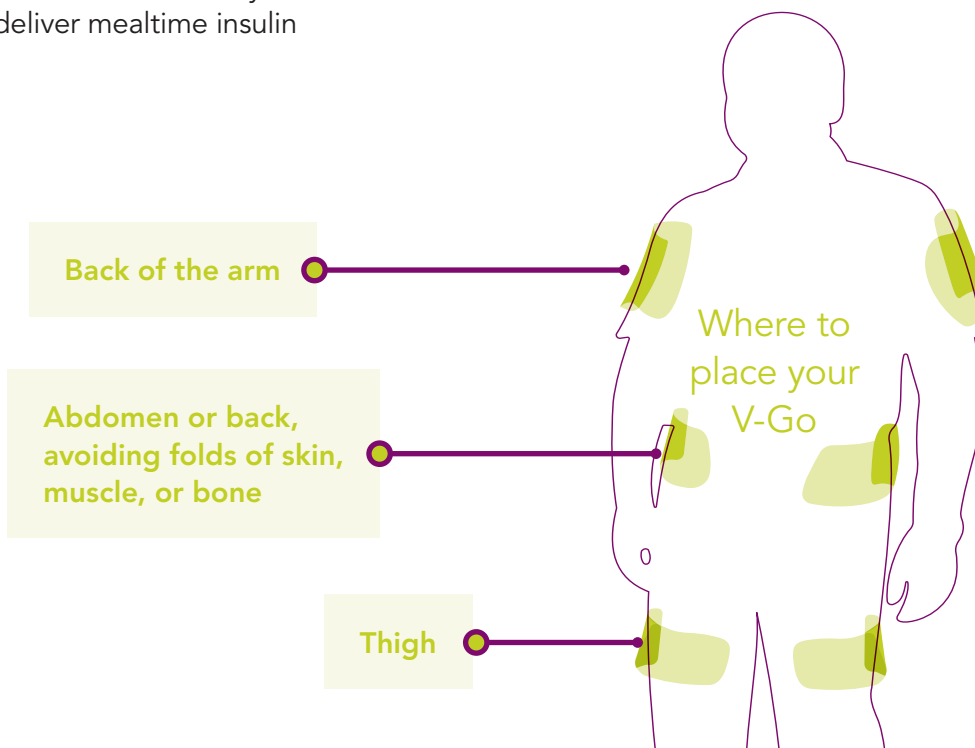
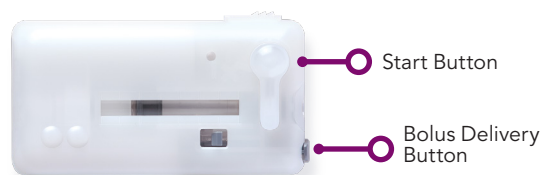
Basal & mealtime insulin delivery you apply like a patch

Choosing a V-Go® application site¹

- Apply V-Go vertically to the **back of your arm or thigh**, or horizontally to your **abdomen or back** (avoiding folds of skin, muscle, or bone)
- Avoid areas with lots of hair or shave them before applying V-Go
- Be sure you will be able to reach the V-Go buttons to operate before applying

Fill, Wear, Go¹

- Fill V-Go with rapid-acting insulin[†]
- Apply V-Go to the **back of your arm, abdomen, back, or thigh**
- Push the Start Button to begin 24-hour insulin infusion
- Push the Bolus Delivery Button to deliver mealtime insulin



[†]A U-100 rapid-acting insulin should be used to fill V-Go.¹



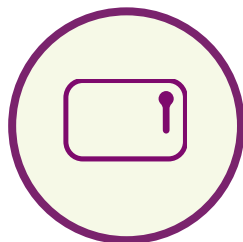
V-Go Cares® Customer Service is with you from Day 1 and beyond

From the moment you start V-Go®, our V-Go Cares Customer Service is with you every step of the way. **Call 1-866-881-1209** to learn more about how your V-Go Cares Team can assist you with a wide range of benefits.



QUESTIONS

We are here to help get your questions answered. Reach out to us and let us know how we can help.*



HOW TO USE V-Go

Would you like to learn more about how to Fill, Wear and Go with V-Go? We have Certified V-Go Trainers that can provide complimentary V-Go step-by-step instruction by phone or video chat at a time that is convenient for you.

Contact a V-Go trainer today!

- Visit www.go-vgo.com to get started and request a trainer or
- Call **1-877-523-1199** to speak directly with a Certified V-Go Trainer



COST & COVERAGE

V-Go is covered by Medicare Part D and most commercial insurance. If V-Go is not covered by your commercial pharmacy plan, our V-Go Cares team can present cost-sharing options to assist in obtaining V-Go.**


*MannKind Corporation does not give medical advice about insulin therapy. Discuss all medical therapies with your healthcare professional.

**Cost sharing options are not a guarantee, eligibility options must be met. Please note that patients whose prescriptions are paid for by any federal health care program like Medicare, Medicare Advantage, Medicare Part D, Medicaid, Managed Medicaid, Veterans Affairs (VA), Department of Defense (DOD), or TRICARE are not eligible for the V-Go cost sharing options.

Have questions? Contact your V-Go Cares Team at 1-866-881-1209 or go to www.go-vgo.com

"With V-Go®, the quality of my day is greatly increased. I'm not worried about taking my insulin."

– Jim, V-Go user

92% 

92% of V-Go users find it easier to manage their diabetes with V-Go compared to their previous therapy⁶

If you ever have questions, be sure to call
V-Go Cares® Customer Service at **1-866-881-1209**

Important Safety Information: If regular adjustments or modifications to the basal rate of insulin are required in a 24-hour period, or if the amount of insulin used at meals requires adjustments of less than 2-Unit increments, use of the V-Go Wearable Insulin Delivery device may result in hypoglycemia. The following conditions may occur during insulin therapy with V-Go: hypoglycemia (low blood glucose) or hyperglycemia (high blood glucose). Other adverse reactions associated with V-Go use include skin irritation from the adhesive pad or skin infections at the infusion site. V-Go is magnetic resonance (MR) unsafe and should be removed before having an X-ray, MRI or CT scan.

References: 1. V-Go Instructions for Use. DCN 2560 Rev C. 06/2022. 2. Niswender K, Basal Insulin Physiology, Pharmacology and Clinical Implications. Postgraduate Medicine. 2011 July;123:(4) 17-26. 3 Lajara R, Fetchick DA, Morris TL, Nikkel C. Use of V-Go Insulin Delivery Device in Patients with Sub-Optimally Controlled Diabetes Mellitus: A Retrospective Analysis from a Large Specialized Diabetes System. Diabetes Therapy. 2015 Dec;6(4):531-545. 4. Sutton D, Higdon C, Nikkel C, Hilsinger K. Clinical Benefits Over Time Associated with Use of V-Go Wearable Insulin Delivery Device in Adult Patients with Diabetes: a Retrospective Analysis. Advances in Therapy. 2018 May; 35(5): 631-43. 5. Grunberger G, Rosenfeld CR, Bode BW, Abbott SD, Nikkel C, Shi L, Strange P. Effectiveness of V-Go for Patients with Type 2 Diabetes in a Real-World Setting: A Prospective Observational Study. Drugs Real World Outcomes. 2020 Mar;7(1):31-40. 6. Data on File. Advise Patient Quant. 2019.

mannkind

V-GO, V-GO CARES, V-GO WEARABLE INSULIN DELIVERY and MANNKIND Logo are registered trademarks of MannKind Corporation.

US-VGO-0121 6/2023 © 2023 MannKind Corporation

VGO[®]
WEARABLE INSULIN DELIVERY