

Change the Delivery, Improve the Results



Welcome to V-Go®

A quick-start guide for your practice

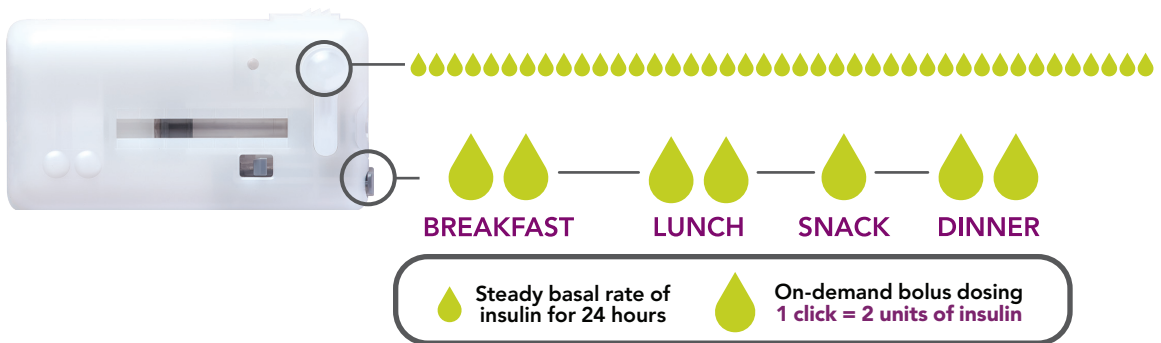
Full Instructions for Patient Use is available at www.go-vgo.com

BASAL AND BOLUS DELIVERY

VGO®
the only
all-in-one
insulin delivery patch

V-Go® Replaces Basal & Bolus Injections

Continuous Subcutaneous Insulin Infusion
with On-demand Bolus Dosing



Consider V-Go in Patients that are:

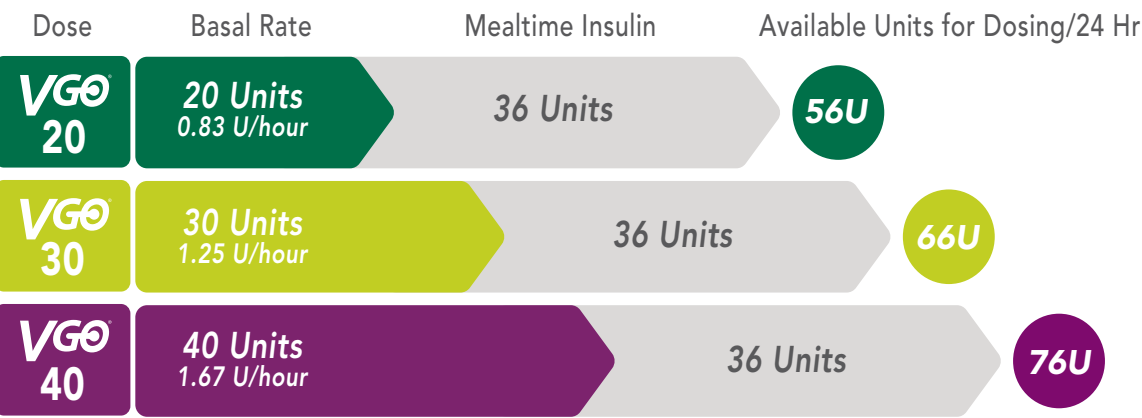
- Not achieving glucose targets
- Consistently **missing insulin injections**
- Struggling with the **complexities of MDI**
- Concerned with “sticking” themselves multiple times a day
- Achieving glucose targets but **prefer to simplify** their basal-bolus regimen

V-Go is cleared for adult patients (over 21 years of age) that require insulin

Discussing V-Go with Patients

- V-Go **replaces** the need for **basal and bolus injections**^{1,2}
- V-Go is **simple to start and easy to use**²⁻⁴
- V-Go is an **all-in-one 24-hour insulin delivery patch** applied anywhere insulin can be injected²
- V-Go delivers basal and bolus insulin therapy using **ONE** type of insulin²
- V-Go **improves blood glucose** control using less insulin^{1,3}

V-Go[®] is Available in 3 Dosing Options*²



V-Go Dosing Guidance

for Initiating V-Go in Patients Switching from MDI*^{5,6}

< 200 lbs		200 - 250 lbs		> 250 lbs	
VGO[®] 20	Start bolus dosing 3 clicks/meal	VGO[®] 30	Start bolus dosing 4 clicks/meal	VGO[®] 40	Start bolus dosing 5 clicks/meal

Consider 1 click with snack. 1 click = 2 Units of insulin

Additional considerations for V-Go initiation dose:

- Adherence to current insulin regimen
- Blood glucose levels

V-Go Titration Dosing Guidance

- Optimize bolus dosing first if meal time glucose remains elevated
- Titrate basal dose after optimizing bolus dosing if A1C or FPG remains elevated

*Individual dosing needs may vary.²

Understand the total daily dose of insulin your patient is actually taking with their current insulin regimen versus what is being prescribed. Healthcare professionals should be aware of the potential for overbasalization with insulin therapy. Selecting the correct V-Go option may lessen the risk of hypoglycemia.

It is common practice to use weight-based dosing and reduce the total daily insulin dose when starting a patient on continuous subcutaneous insulin infusion therapy and these factors should be considered when starting V-Go.

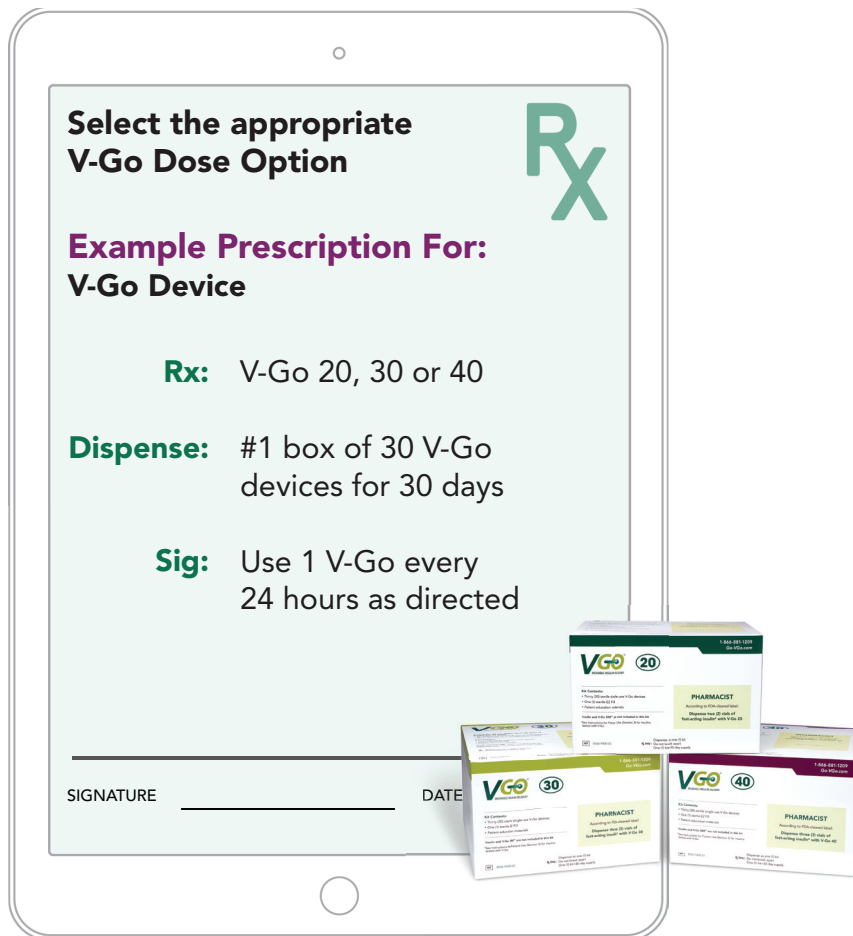
BASAL AND BOLUS DELIVERY

VGO[®]
the only
all-in-one
insulin delivery patch

Prescribing V-Go®

Write 2 prescriptions and send to patients' pharmacy

1 V-Go® device Rx



Basal-Bolus with V-Go requires only 2 co-pays

No out-of-pocket expense for

- Basal insulin
- Pen needles
- Insulin syringes
- Application inserters
- Infusion sets
- Delivery controllers

2

Rapid-acting Insulin Rx

**V-Go is filled with a
U-100 Rapid-Acting Insulin**

Rx

**Example Prescription For:
Insulin to Fill V-Go 30**

Rx: U-100 rapid-acting insulin

Dispense: #3 x 10 mL vials

Sig: Administer up to
_____ U/day

**Per FDA Labeling
Required Vials/Month:**

#2 x 10 mL vials required for V-Go 20
#3 x 10 mL vials required for V-Go 30
#3 x 10 mL vials required for V-Go 40

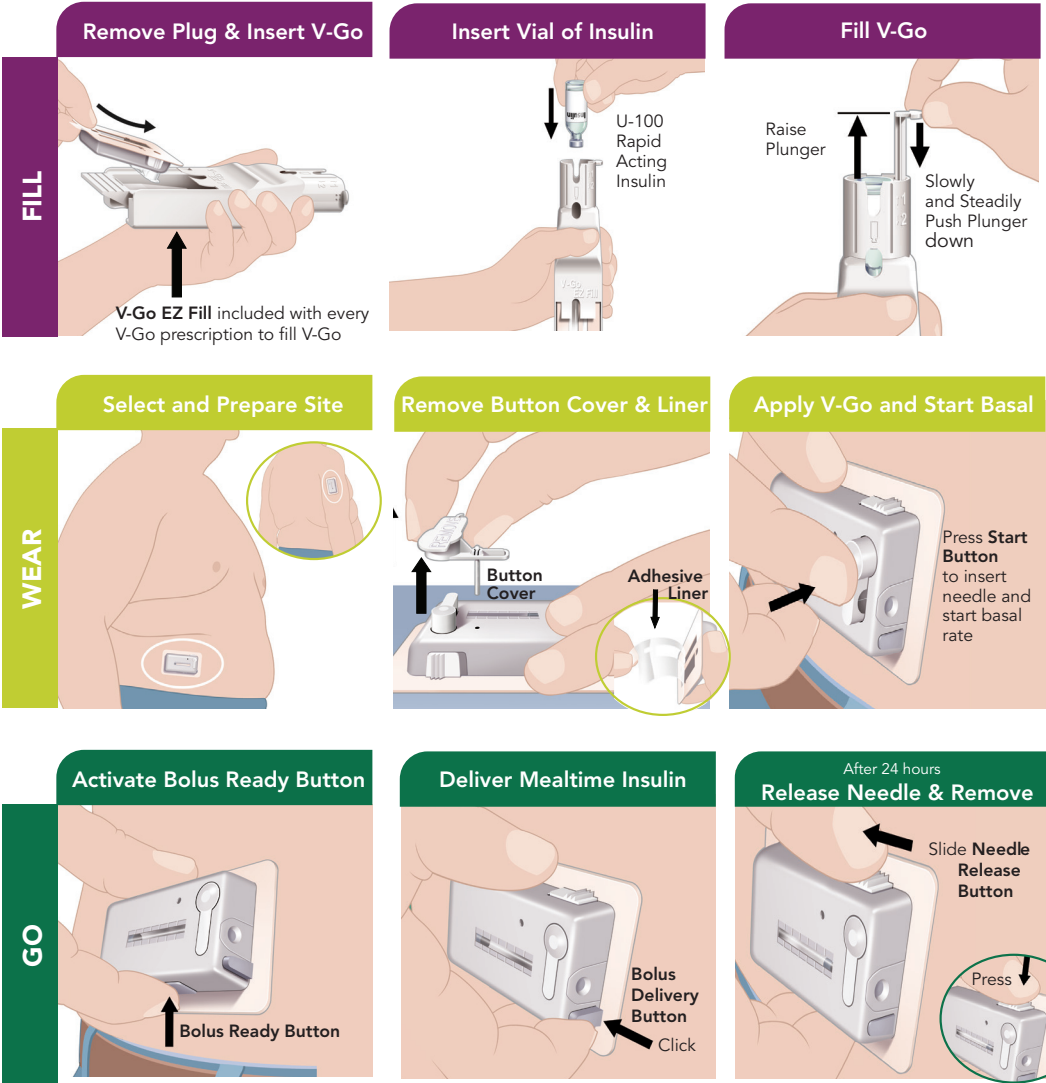


*A U-100 rapid acting insulin should be used with V-Go. Humalog® (insulin lispro [rDNA origin] injection) and NovoLog® (insulin aspart [rDNA origin] injection) have been tested and found to be safe for use in V-Go.² Humalog® is a registered trademark of Eli Lilly and Company. NovoLog® is a registered trademark of Novo Nordisk A/S.

BASAL AND BOLUS DELIVERY

VGO[®]
the only
all-in-one
insulin delivery patch

Review How to Use V-Go[®] with Patient²



Refer to the Instructions for Patient Use at www.go-vgo.com to review all steps required to fill, wear and use V-Go. Instructional videos are also available on the website.

Ensure that patients understand basal-bolus therapy and that they have a plan to manage hypoglycemia and hyperglycemia.²

V-Go Cares® Customer Service

Our V-Go Cares team is here to assist with the following:



Answer All V-Go Questions



Assist with Cost-Sharing Options
for Eligible Patients



Co-pay Card Support



Pharmacy Support



Call V-Go Cares at **1-866-881-1209**



On Demand 1:1 V-Go Patient Training

In-person, virtual or by phone based on availability



Fax training start sheet* to **1-866-284-6950** to
get your patient started.

Patients can call **1-877-523-1199** to speak
directly to a member of our Certified Training Team.

*V-Go Training Start Sheets can be obtained from your MannKind sales representative or downloaded at www.go.vgo.com and visiting Resources & Support on the Healthcare Professional site.

MannKind Corporation does not give medical advice about insulin therapy. Patients should discuss all medical therapies with you and follow your instructions.

BASAL AND BOLUS DELIVERY

VGO
the only
all-in-one
insulin delivery patch

V-Go®

Easy to Start, Simple to Use



1

Prescribing Made Easy

Write 2 prescriptions (V-Go and U-100 rapid-acting insulin) and send to the patients' preferred pharmacy.

2

Start on V-Go, Stay on Track

Certified V-Go trainers are available to provide step-by-step instruction on how to fill, wear and use V-Go. Simply fax a completed V-Go Start Sheet to **1-866-284-6950** and our Certified Clinical Education Team will contact your patient to schedule a time convenient for them.

*V-Go Training Start Sheets can be obtained from your MannKind sales representative or downloaded at **www.go.vgo.com** under Resources & Support on the Healthcare Professional site.

V-Go Cares® Customer Service is here to assist at **1-866-881-1209**

Important Safety Information: If regular adjustments or modifications to the basal rate of insulin are required in a 24-hour period, or if the amount of insulin used at meals requires adjustments of less than 2-Unit increments, use of the V-Go Wearable Insulin Delivery device may result in hypoglycemia. The following conditions may occur during insulin therapy with V-Go: hypoglycemia (low blood glucose) or hyperglycemia (high blood glucose). Other adverse reactions associated with V-Go use include skin irritation from the adhesive pad or skin infections at the infusion site. V-Go is magnetic resonance (MR) unsafe and should be removed before having an X-ray, MRI or CT scan.

1. Lajara R, Fetchick DA, Morris TL, Nikkel C. Use of V-Go insulin delivery device in patients with sub-optimally controlled diabetes mellitus: a retrospective analysis from a large specialized diabetes system. *Diabetes Ther.* 2015;6(4):531-545. **2.** V-Go Instructions for Patient Use, DCN 2560 Rev. C 06/2022. **3.** Rosenfeld CR, Bohannon NJ, et al. The V-Go insulin delivery device used in clinical practice: patient perception and retrospective analysis of glycemic control. *Endocr Pract.* 2012;18(5):660-667. **4.** Data on file. Advise Patient Quant, 2019. **5.** Adapted from Edelman SV, Bode BWV, Bailey TS, et al. Insulin pump therapy in patients with type 2 diabetes safely improved glycemic control using a simple insulin dosing regimen. **6.** Data on File. March 2024. MannKind Corporation.

mannkind

V-GO, V-GO WEARABLE INSULIN DELIVERY, V-GO CARES and MANNKIND logo are registered trademarks of MannKind Corporation.
US-VGO-0135 04/2024 © 2024 MannKind Corporation

VGO®
the only
all-in-one
insulin delivery patch